

## Tri-Color Prestained Protein Marker – 500

**Catalog Number:** 22301

**Description:** Tri-Color Prestained Protein Marker - RBG

**Background:** Tri-Color Prestained Protein Markers are a mixture of recombinant proteins ranging from 10 kD to 250 kD. Red and Green bands at 25 kD and 70 kD provide easy references for molecular weight identification. The molecular weights of the prestained markers are confirmed in Tris-Glycine SDS-PAGE system with an accuracy of > 95% by using unstained protein ladders. The protein markers are highly stable with minimal band broadening during storage. Products are conveniently packaged and ready to use, with no heating, dilution or additional reducing agent required.

**Features:**

- Broad MW range (10-250 kD)
- Precise molecular weights (MWs)
- Clear and sharp bands
- Optimized membrane binding affinity
- High storage stability
- Compatible with NIR fluorescent system

**Molecular Weight Range:** 10-250 KD

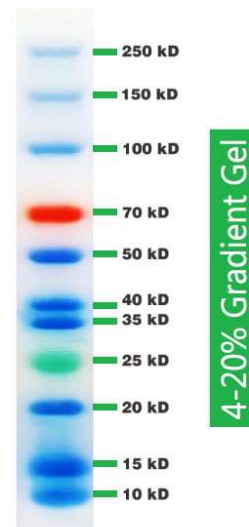
**Detection Method:** Colorimetric

**Stain Type:** Red, Green and Blue

**Constituents:** 62.5 mM Tris-HCl (pH 7.5 at 25°C), 1 mM EDTA, 2% (w/v) SDS, 10 mM DTT and 30% (v/v) glycerol

**Storage Conditions:** 4 °C for up to 1 year or store at -20 °C for 3 years. Avoid repeated freezing and thawing

**Usage:** The protein ladder comes ready to use in gel loading buffer. After thawing and mixing, load approximately 3-5  $\mu$ L of protein marker per lane. Do NOT heat, dilute, or add reducing agents before loading



**Tri-Color Prestained Protein Marker- 500**

10-250 kD, Green and Red bands at 25 kD and 70 kD.

FOR RESEARCH USE ONLY. NOT FOR DIAGNOSTIC APPLICATIONS